

Mike
Dobson



Great North Road
Micklefield, Leeds, LS25 4DR

£215,000

Great North Road

Nestled in the charming village of Micklefield, Leeds, this three-bedroom end townhouse offers a perfect blend of modern living and comfort. Set in a corner location.

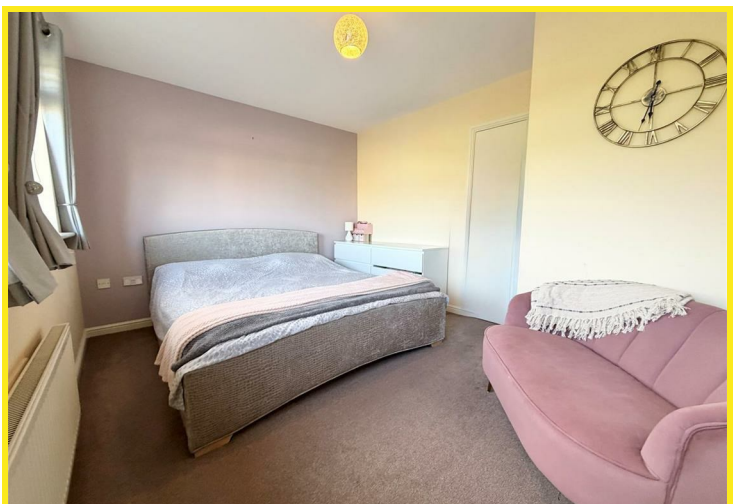
Upon entering, you are greeted by a side entrance hall that leads to a spacious lounge, where PVCu double glazed French doors invite natural light and provide access to the rear garden. The fitted kitchen/diner is equipped with an array of integral appliances, including a four-ring electric hob, built-in electric oven, integrated fridge and freezer, and a dishwasher, making it a joy for any home cook. A convenient ground floor w.c adds to the practicality of the layout.

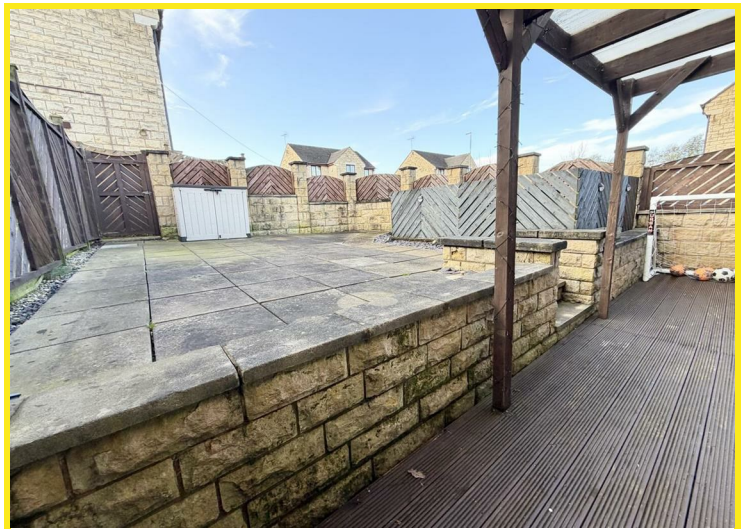
The first floor comprises three well-proportioned bedrooms, with the master featuring fitted wardrobes and drawers for ample storage. The bathroom is appointed with a three-piece white suite, including a 'P' shaped bath with a shower overhead, wash basin and a low flush WC.

The property benefits from PVCu double glazing and gas-fired central heating, with a Worcester Bosch combination boiler, ensuring warmth and energy efficiency throughout the year.

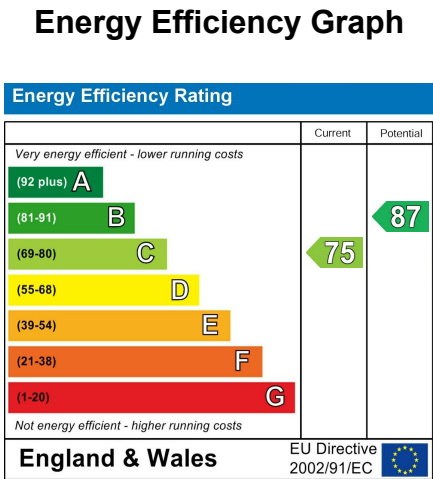
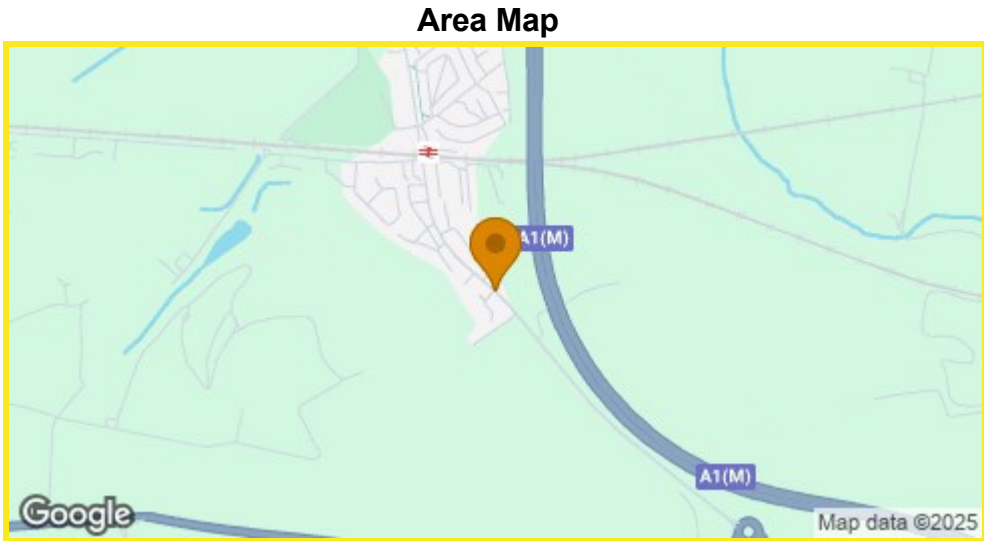
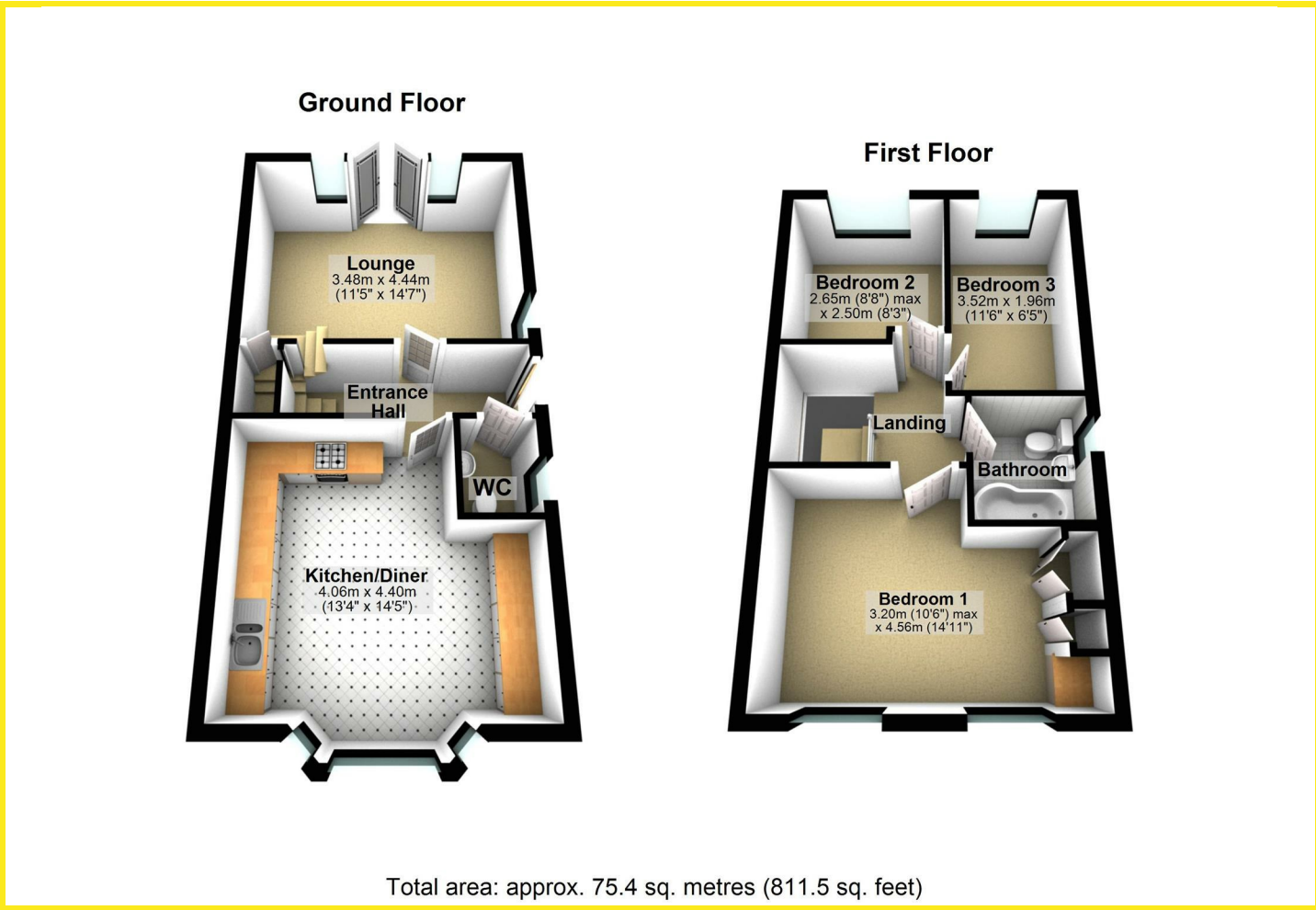
Outside, the low-maintenance front garden adds to the property's appeal, while the rear garden is fully enclosed and thoughtfully designed with split-level decking and paving, providing an ideal setting for outdoor entertaining. Additionally, an allocated car parking space at the rear ensures convenience for residents.

This townhouse is a wonderful opportunity for those seeking a modern home in a desirable location, combining comfort, style, and practicality in one attractive package.





Floor Plan



Directions